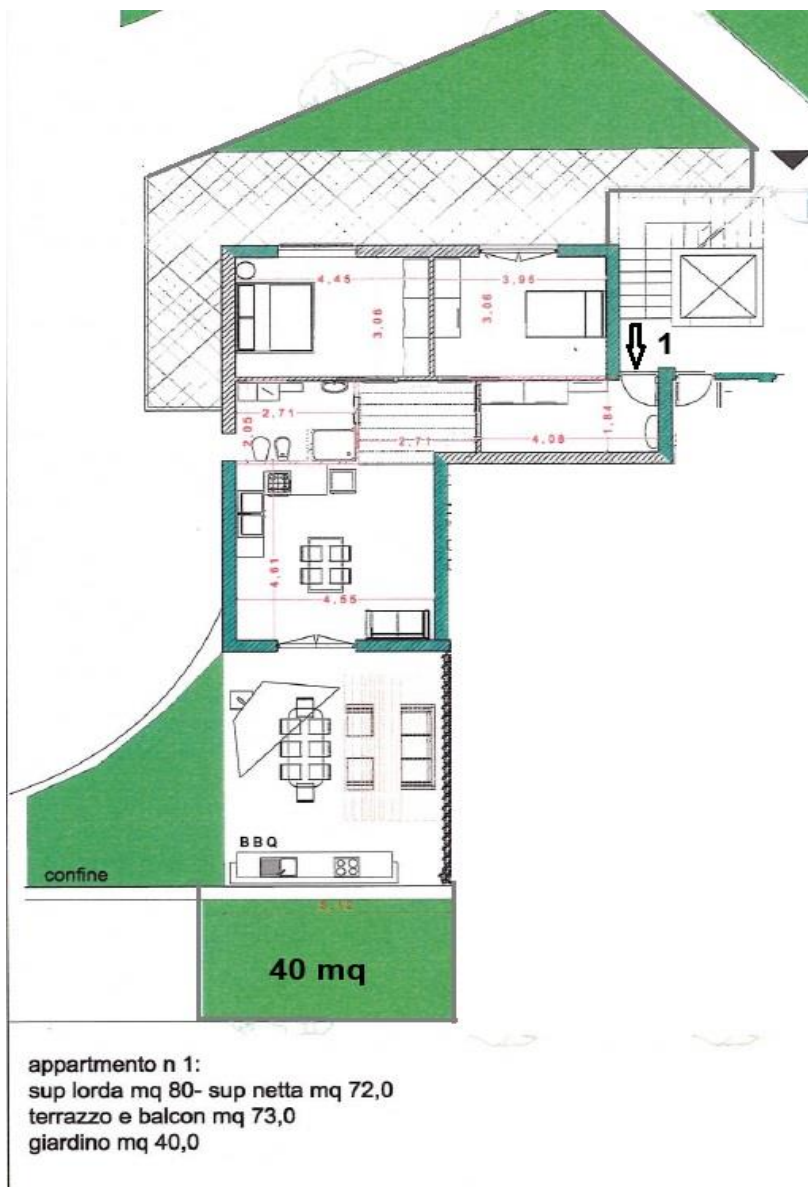


GREEN HOUSE : APPARTAMENTO N 1 PIANO TERRA



GARAGE MQ 20

SUPERFICIE UTILE 72.00 MQ

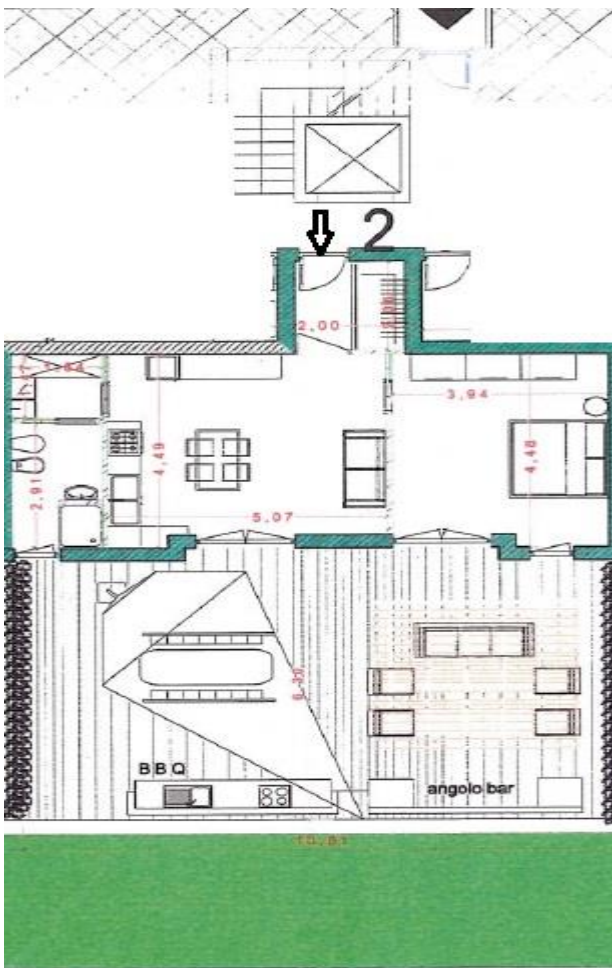
PREZZO EURO 237.600 +4% IVA



**CONSULENTI
IMMOBILIARI**

Property Solutions

GREEN HOUSE: APPARTAMENTO N 2 PIANO TERRA



appartamento n 2:
sup lorda mq 56,8,
sup netta mq 52,0 ca
terrazzo e balcon mq 45,0

SUPERFICIE UTILE MQ 52

GARAGE MQ 20

PREZZO EURO 171.600 +4% IVA



CONSULENTI IMMOBILIARI

Property Solutions

GREEN HOUSE : APPARTAMENTO N 3 PIANO TERRA

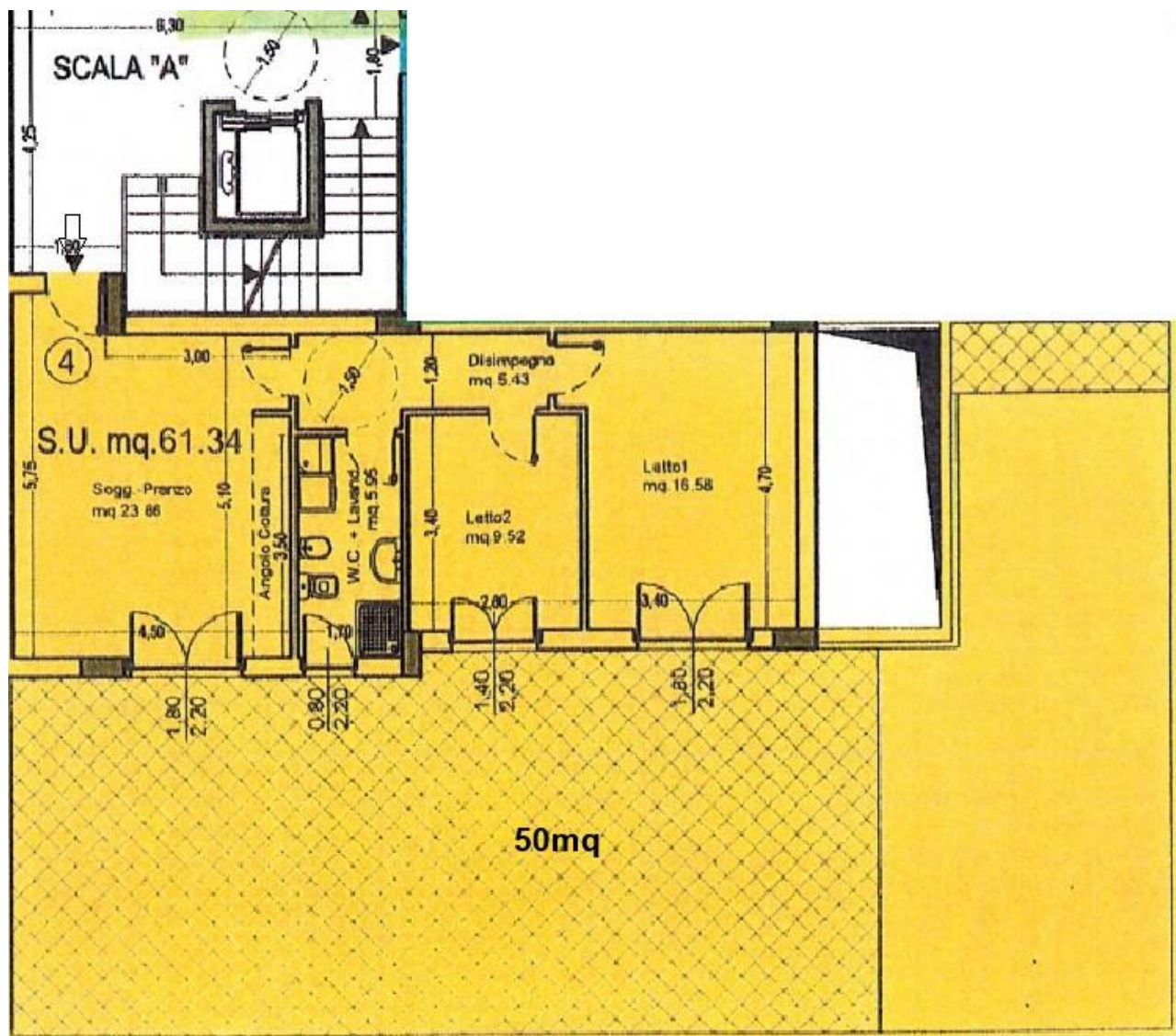


SUPERFICIE UTILE MQ 70

GARAGE MQ 20

PREZZO EURO 231.000 + IVA 4%

GREEN HOUSE : APPARTAMENTO N 4 PIANO TERRA



SOGG. PRANZO CUCINA MQ 23.86

DISIMPEGNO MQ 5.43

WC- LAVANDERIA MQ 5.95

LETTO 1 MQ 16.58

LETTO 2 MQ 9.52

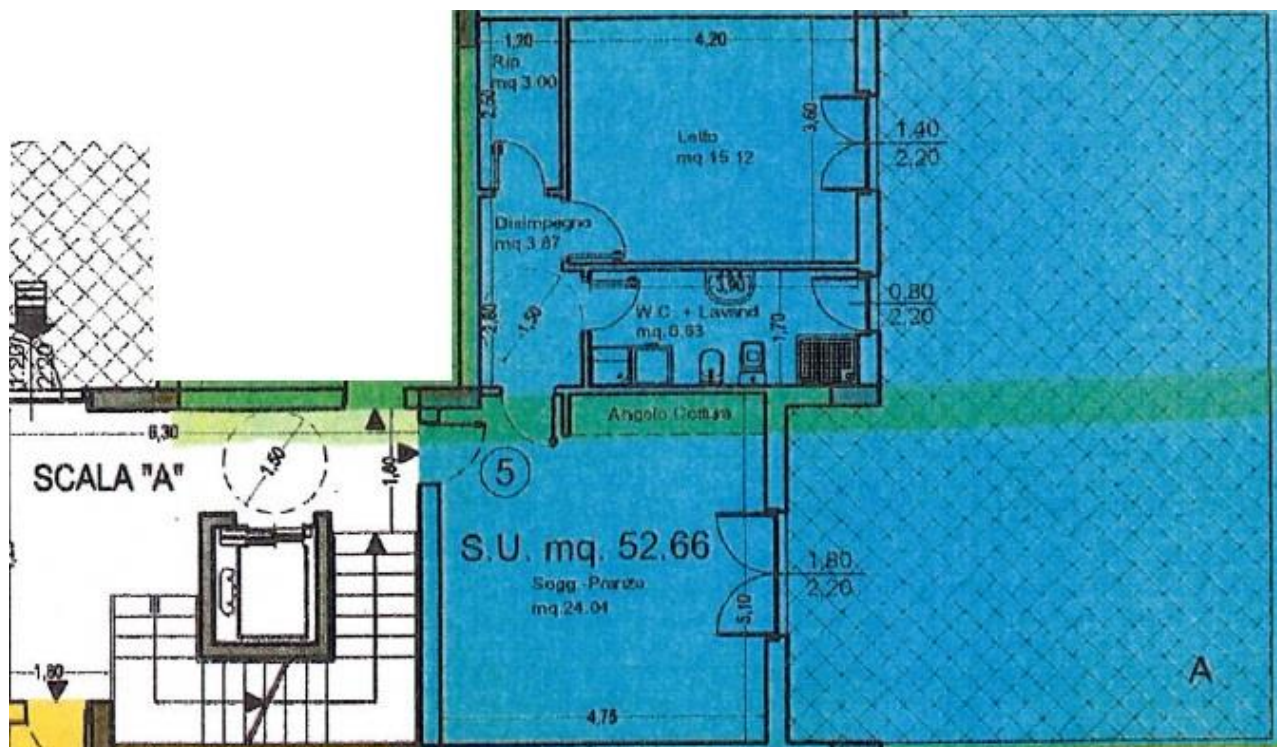
SUPERFICIE UTILE MQ 61.34

SPAZIO ESTERNO 50 MQ

GARAGE MQ 20

PREZZO EURO 202.422 + IVA 4%

GREEN HOUSE : APPARTAMENTO N 5 PIANO TERRA



SOGG.PRANZO CUCINA MQ 24.04

SPAZIO ESTERNO MQ 35.00

DISIMPEGNO MQ 3.87

GARAGE MQ 20.00

WC- LAVANDERIA MQ 6.63

RIPOSTIGLIO MQ 3.00

LETTO MQ 15.12

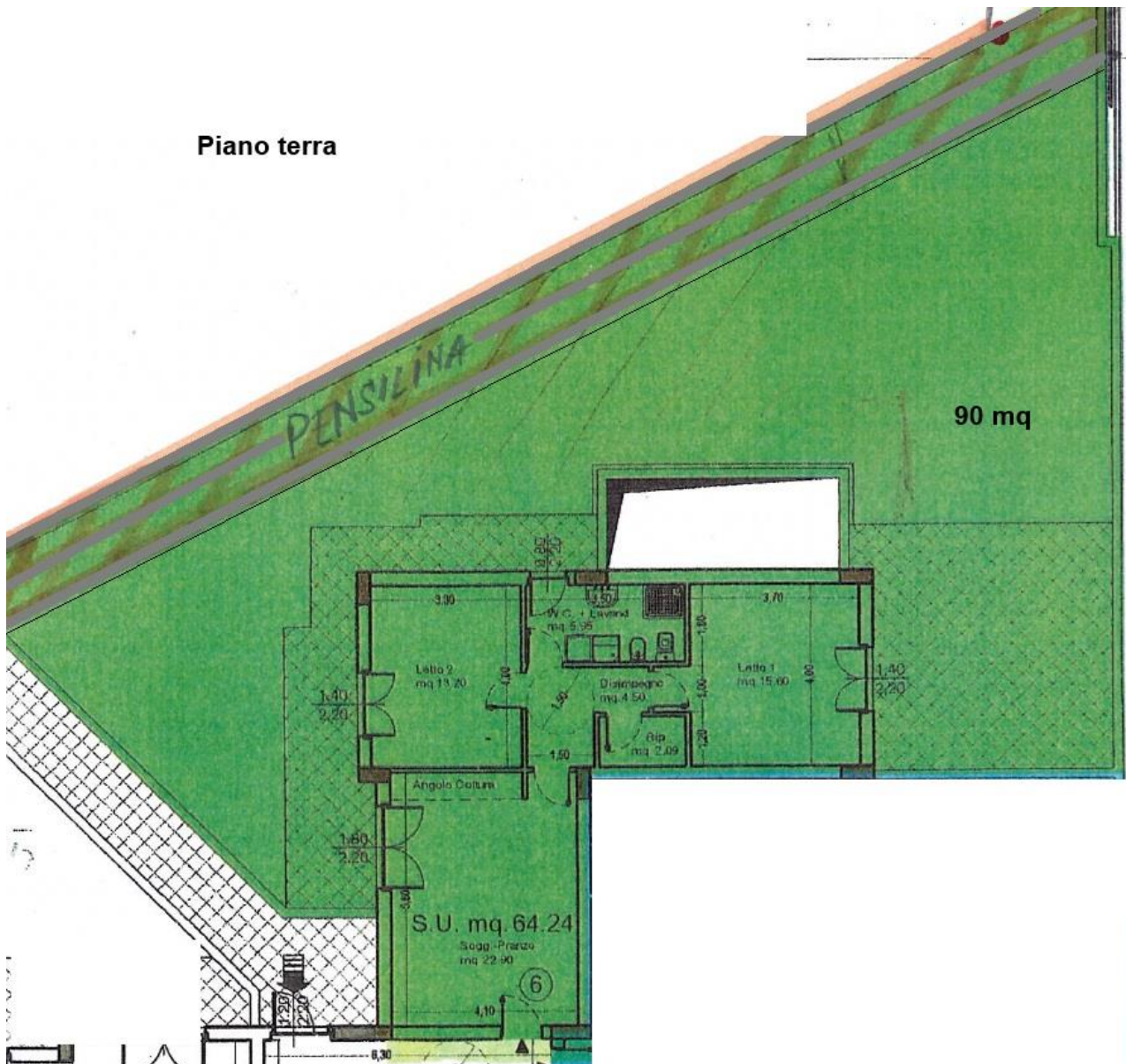
PREZZO EURO 173.778 + 4% IVA

SUPERFICIE UTILE MQ 52.66



GREEN HOUSE : APPARTAMENTO N 6 PIANO TERRA

Piano terra



SOGG.PRANZO CUCINA MQ 22.90

DISIMPEGNO MQ 4.50

WC- LAVANDERIA MQ 5.95

RIPOSTIGLIO MQ 2.09

LETTO 1 MQ 15.60

LETTO 2 MQ 13.20

SPAZIO ESTERNO MQ 90.00

GARAGE MQ 20.00

SUPERFICIE UTILE MQ 64.24

PREZZO EURO 211.992+ 4% IVA